

EINSTEIN
Foundation.de

*My scientific work is motivated by an
irresistible longing to understand the
secrets of nature, not by other feelings.*

/// Albert Einstein. Letter to F. Lentz, 1949

Contents

Preface	01
---------------	----

The Foundation

About the Foundation	07
----------------------------	----

Funding

/// Personal Funding

Einstein Professor	10
Einstein Junior Fellow	10
Einstein International Postdoctoral Fellow	11
Einstein Visiting Fellow	11
Einstein Research Fellow	12

/// Project Funding

Einstein Research Project	12
---------------------------------	----

Einstein Circle	12
Research Conferences	13

/// Structural Funding

Einstein Centre	14
-----------------------	----

How to find us

For excellent scientists, researchers and artists	18
For emerging creative talents	18
For curious minds	19
For Berlin	19
Imprint	20

When I examine myself and my methods of thought, I come close to the conclusion that the gift of imagination has meant more to me than my talent for absorbing absolute knowledge.

/// Albert Einstein, quoted from memory by a friend in 1978

The Einstein Foundation Berlin:
Promoting leading-edge science
and research



Visit www.einsteinfoundation.de for additional information.

/// Staircase at the Berlin-Brandenburg Academy of Sciences and Humanities

The Einstein Foundation Berlin

Established in 2009 by the State of Berlin, the Einstein Foundation funds global-standard science and research in Berlin, helping to consolidate the city's reputation as one of the world's foremost research hotspots.

The projects to be funded are chosen by an independent commission composed of eminent academics.

Ensuring excellence. Promoting talents. Strengthening collaborations.

The Einstein Foundation Berlin operates a competitive, science-driven procedure to identify and fund the best projects and people.

With its particular focus on inter-institutional collaborative research, the Foundation is a strategic partner for the Berlin universities.

Science-driven. Committed to Berlin. Cosmopolitan.

Research funding is the Foundation's primary task although it does run some projects of its own. Funding decisions are made autonomously, and the Foundation's activities are exclusively science-driven.

Funds are awarded on the basis of a competitive, multi-step review and decision-making procedure. There are no quotas for subjects or institutions. What is crucial is the quality of the proposals and projects and their potential for enhancing the reputation of Berlin as a location for research.

For insight. For society. For the future.

The Einstein Foundation Berlin places great emphasis on communicating the contents of the projects it supports to the general public.

*I have no special talent.
I am only passionately curious.*

/// Albert Einstein. Letter to Carl Seelig, 1952

The Einstein Foundation Berlin funds exceptional scientists as well as excellent research projects. It promotes networking and enhances the visibility of Berlin as an attractive location for science and research.

/// Personal Funding

Einstein Professor

The Einstein Professorship is the tool with which the Einstein Foundation supports the appointment of outstanding international researchers to a Berlin university or Charité-Universitätsmedizin Berlin by awarding a non-recurring grant to establish the professorship. The programme is also intended to prevent leading Berlin researchers from accepting offers from universities outside of the city.



"The dynamism and quality of science and culture in Berlin make it into one of the most exciting cities in the world."

/// Einstein Professor
Claudia Draxl

/// Personal Funding

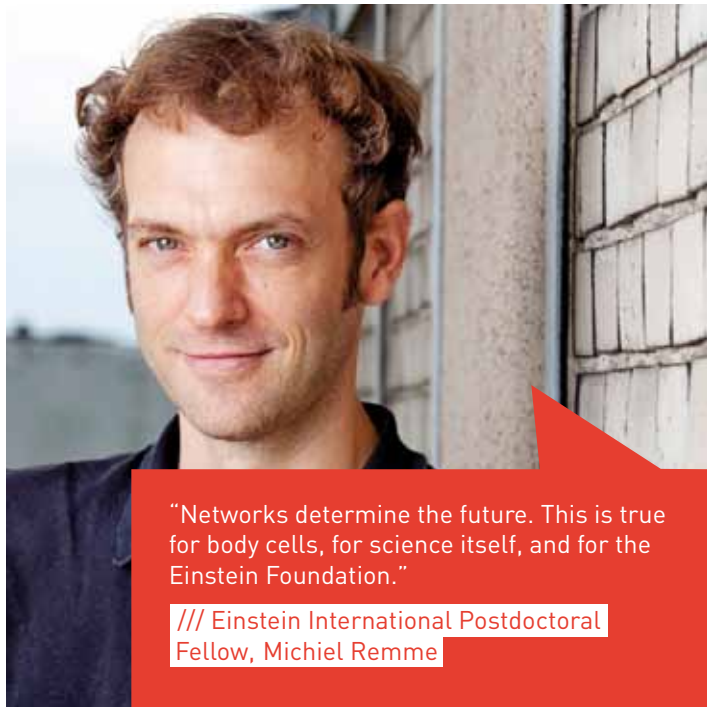
Einstein Junior Fellow

The Foundation grants Einstein Junior Fellowships to promote excellent junior researchers working in Berlin. In addition to the position as a junior researcher, the funding also includes a grant for the respective research project.



"I am thrilled about the freedom to do research which the Einstein Junior Fellowship has given me."

/// Einstein Junior Fellow
Anita Traninger



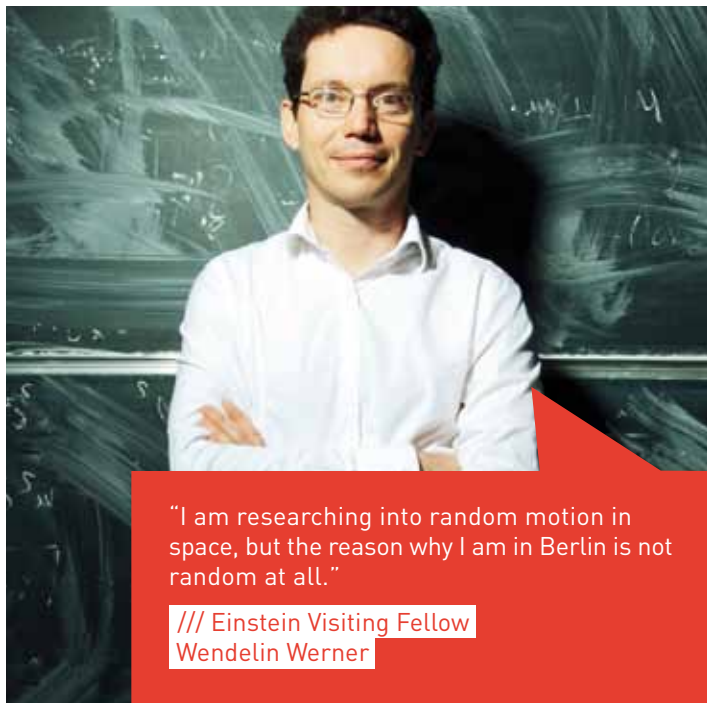
"Networks determine the future. This is true for body cells, for science itself, and for the Einstein Foundation."

/// Einstein International Postdoctoral Fellow, Michiel Remme

/// Personal Funding

Einstein International Postdoctoral Fellow

This programme is open to high-achieving young researchers at universities in Berlin who wish to include a postdoctoral researcher from abroad in their junior research group. Fellows are eligible to receive funding for a maximum of five years for the duration of the project.



"I am researching into random motion in space, but the reason why I am in Berlin is not random at all."

/// Einstein Visiting Fellow
Wendelin Werner

/// Personal Funding

Einstein Visiting Fellow

Einstein Visiting Fellows are leading scientists and scholars from abroad who lend their expertise to existing areas of academic excellence in Berlin and promote international collaborations. To achieve this, they set up a working group in Berlin.

/// Personal Funding

Einstein Research Fellow

As Einstein Research Fellows, professors at Berlin universities and Charité Universitätsmedizin are able to spend up to two years conducting research at a non-university research institute.



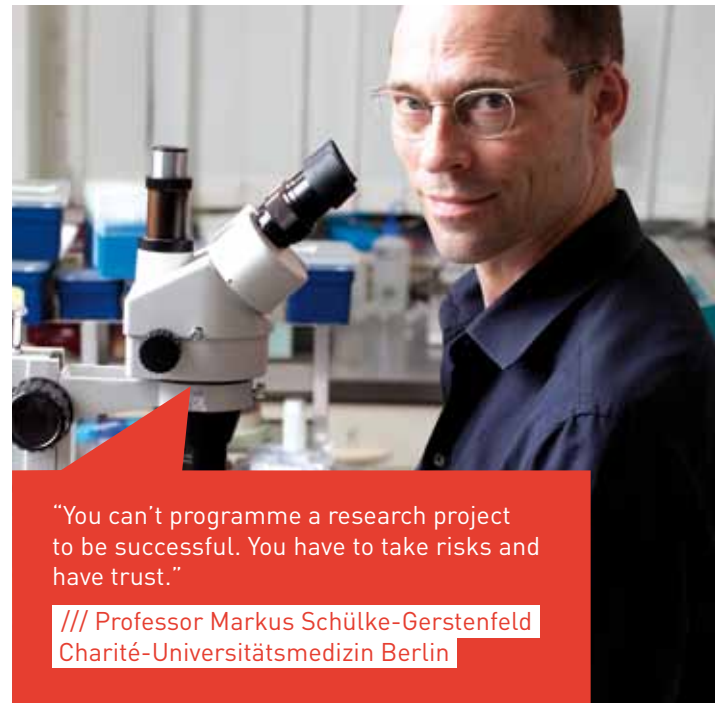
“The Einstein Fellowship is a great scientific honour. I can dedicate myself to my research.”

/// Professor Stefan Rinke
Freie Universität Berlin

/// Project Funding

Einstein Research Projects

Einstein Research Projects fund outstanding international collaborative projects at Berlin universities or Charité Universitätsmedizin. These projects should be exceptionally innovative and high-risk – in the most positive sense of the word.



“You can’t programme a research project to be successful. You have to take risks and have trust.”

/// Professor Markus Schülke-Gerstenfeld
Charité-Universitätsmedizin Berlin



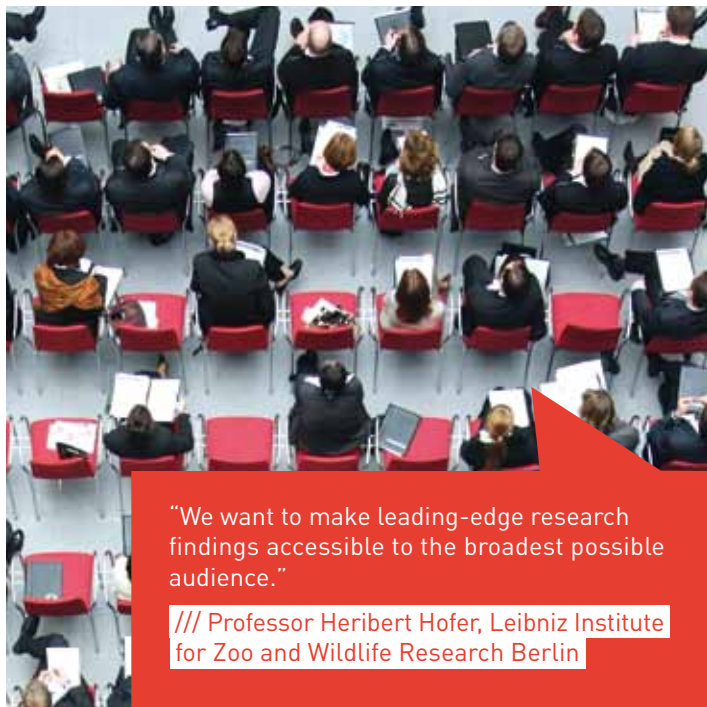
“An Einstein Circle offers young scientists ideal conditions for independent collaboration.”

/// Dr. Anne Baillet
Humboldt-Universität zu Berlin

/// Project Funding

Einstein Circle

The programme offers postdoctoral researchers in Berlin the opportunity to participate in theme-based collaborations across the city. The Einstein Circle should be organised independently and involve several institutions.



“We want to make leading-edge research findings accessible to the broadest possible audience.”

/// Professor Heribert Hofer, Leibniz Institute
for Zoo and Wildlife Research Berlin

/// Project Funding

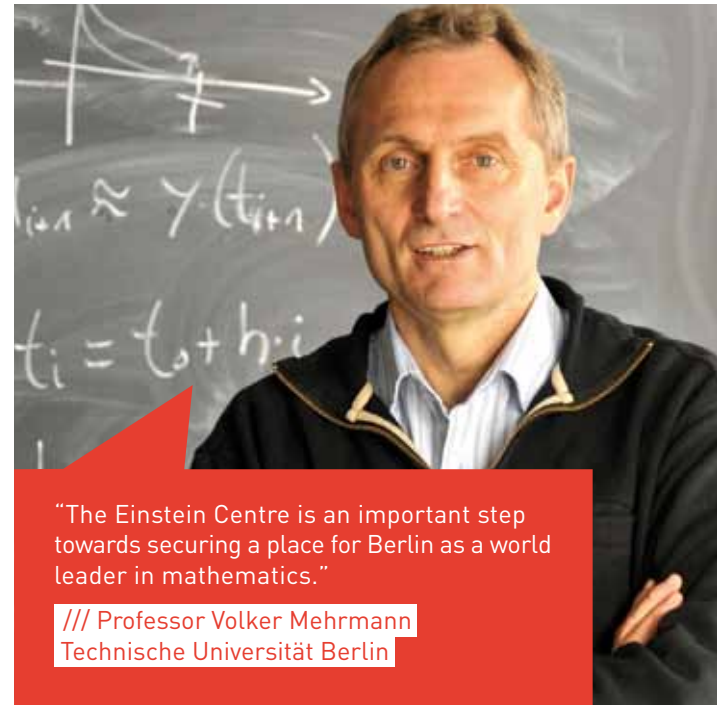
Research Conferences

The objective of this programme is to increase the international visibility of Berlin as a location for science and research, to strengthen cooperation with foreign institutions and to spark the enthusiasm of young scientists for research in Berlin.

/// Structural Funding

Einstein Centre

Einstein Centres contribute to the long-term sustainability of major, top-level collaborative research clusters in Berlin, which already receive external grants, by providing funding to establish cross-institutional networks of research and teaching and consolidate cooperation between eminent researchers.



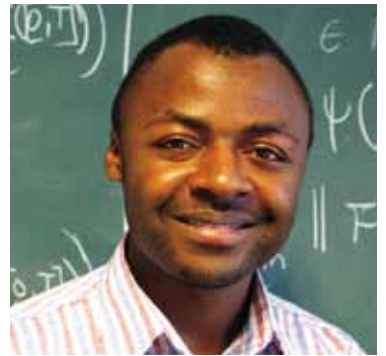
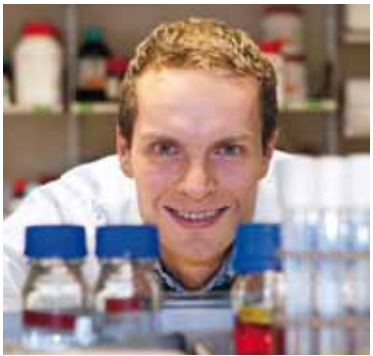
"The Einstein Centre is an important step towards securing a place for Berlin as a world leader in mathematics."

/// Professor Volker Mehrmann
Technische Universität Berlin

More Information ...

Visit www.einsteinfoundation.de for additional information on the Einstein Foundation's funding programmes, initiatives and events. We will be pleased to send you our detailed programme information and application forms. Please do not hesitate to contact us.

EINSTEIN
Foundation.de



The most beautiful thing we can experience is the mysterious. It is the source of all true art and science. He, to whom this emotion is a stranger, who can no longer pause to wonder and stand rapt in awe, is as good as dead and his eyes are closed.

/// Albert Einstein. The World As I See It, 1934

Our goal: To facilitate
leading-edge research.
Together with you. In Berlin!

/// Personal and project funding programmes

For excellent scientists, researchers and artists

In accordance with its statutes, the Einstein Foundation Berlin funds programmes promoting excellent inter-institutional research projects and exceptional scientists and artists in Berlin. Is your research project ideally suited to Berlin? Then apply now! Submit your application via a Berlin university or Charité Universitätsmedizin.



"Anyone producing knowledge should not withdraw from society. This is a conviction we share with the Einstein Foundation."

/// Professor Olafur Eliasson, Institut für Raumexperimente at UdK Berlin

/// Berlin Encounters

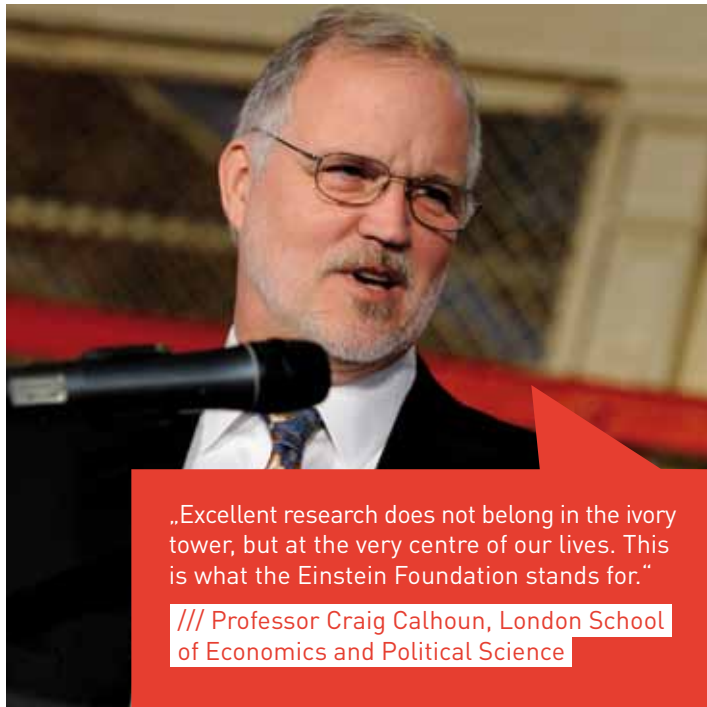
For emerging creative talents

Our network "Berlin Encounters" is an innovative platform for exchange between young leaders from science, business, art and culture. An annual workshop with prominent speakers from various fields of society launches interdisciplinary projects and generates a strong network for Berlin.



"The Einstein Foundation's innovative event formats are a major benefit, especially for emerging talents."

/// Dr. Matteo Valleriani
Berlin Encounters



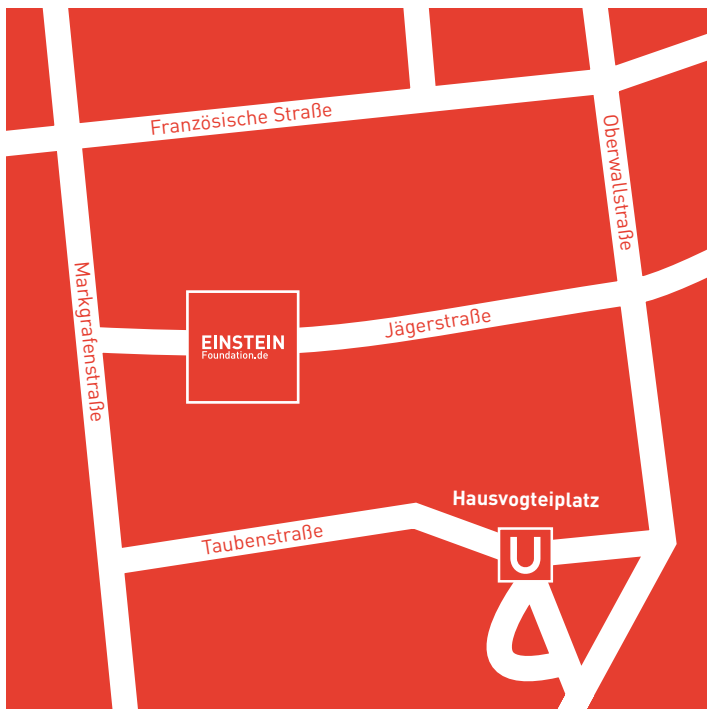
„Excellent research does not belong in the ivory tower, but at the very centre of our lives. This is what the Einstein Foundation stands for.“

/// Professor Craig Calhoun, London School of Economics and Political Science

/// Meeting Einstein Events

For curious minds

Science, research and Berlin belong together. That is why the Einstein Foundation Berlin has developed various event formats allowing exceptional scientists to present their results to a wide audience. Would you like to attend? Do not hesitate to contact us. We would be happy to welcome you to one of our next events.



/// How to find us

For Berlin

Einstein Foundation Berlin

Head office in the Berlin-Brandenburg Academy of Sciences and Humanities

Jägerstraße 22/23, 10117 Berlin

Tel.: +49 30 / 20 370 - 228

Fax: +49 30 / 20 370 - 377

contact@einsteinfoundation.de

www.einsteinfoundation.de

Imprint

Publisher and Editor

Einstein Foundation Berlin
Head office in the Berlin-Brandenburg
Academy of Sciences and Humanities

Jägerstraße 22/23
10117 Berlin
Germany

First Edition (English): May 2013

Contact

Tel.: +49 30 / 20 370 - 228
Fax: +49 30 / 20 370 - 377
contact@einsteinfoundation.de
www.einsteinfoundation.de

Account for Donations

Deutsche Bank Berlin
BIC: 25120310000000000000000000000000
Acc. No.: 769 664 444

Concept and Design

Goldene Zeiten Berlin GmbH
Alexander Heidemüller

Photographs

BBAW
Katja Bilo
Emmanuele Contini
Andreas Franke
Yao Hui
Mirco Lomoth
Hans Scherhauser
Studio Olafur Eliasson
TU Berlin/Dahl
Moritz Vennemann
Markus Wimmer

With kind permission of those featured.

Printing

gugler GmbH



The highest standards in eco-efficiency. Unique worldwide: Cradle-to-Cradle®- printed products innovated by gugler*. All printed components have been optimised for the biological cycle. Binding excluded.

*The eternal mystery of the world is
its comprehensibility.*

/// Albert Einstein. Out of my Later Years, 1952

For Research. For Berlin.